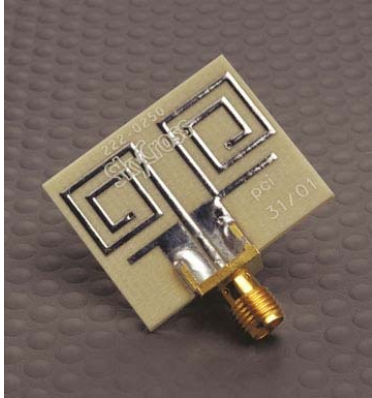


## 2.45 GHz Printable Antenna for Low Cost Wireless Applications



### Features

- *Very Efficient*
- *Multi-Purpose ISM Band*
- *Low Profile for Embedded Applications*
- *Conforms to Radio Case Constraints*
- *Low Cost*

This 2.45 GHz antenna is designed using SkyCross' patented antenna technology, providing superior efficiency and gain directivity in a small package. This antenna is the best performance solution for developers needing a low cost compact antenna emerging applications.

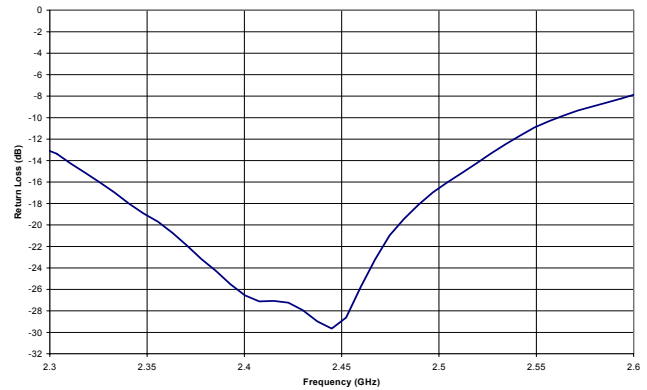
### Electrical Specifications

Frequency Range	2400 — 2500 MHz
Gain	1.4 dBi peak
VSWR	< 1.5:1
Polarization	Linear
Pattern	Omni-directional
Feed Impedance	50 Ohms unbalanced

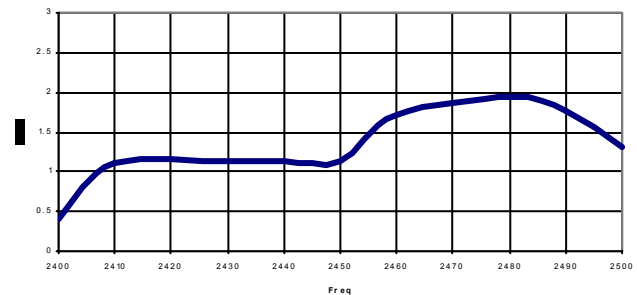
### Mechanical Specifications

Size	1.2 x 0.99 x 0.06 Inches 30.48 x 25.1 x 1.7 mm
------	---

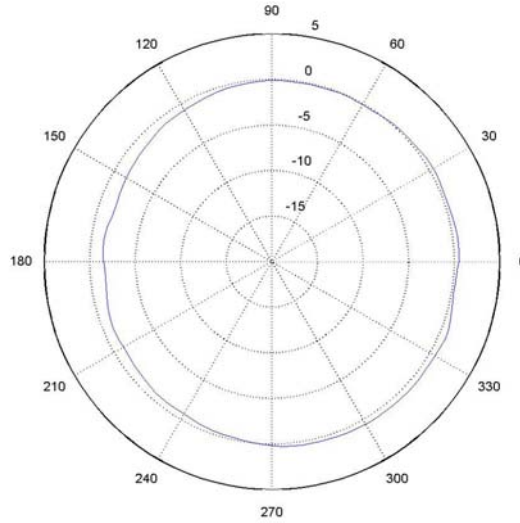
### Typical Return Loss



### Swept Gain

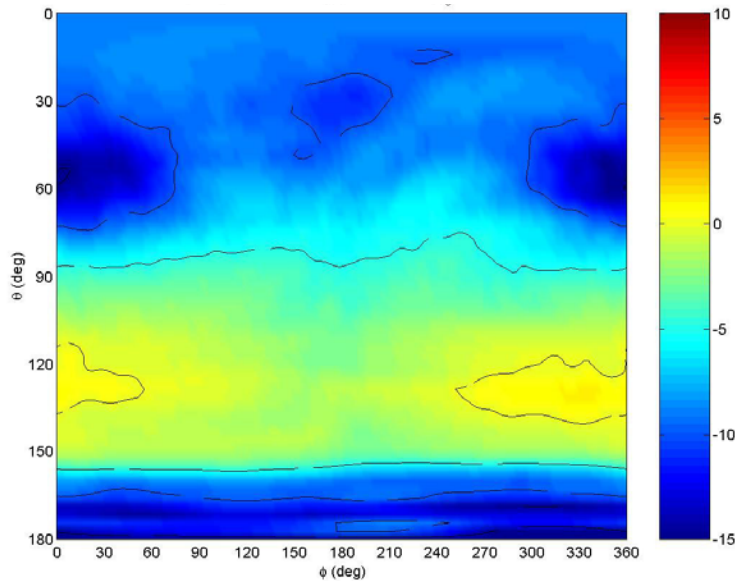


### Typical Elevation Gain Pattern at 2500 MHz



36 degrees below horizon

### Spherical Gain Contour Map at 2500 MHz



© 2001 SkyCross, Inc. SkyCross is a trademark of SkyCross, Inc. All rights reserved. Protected by one or more US Patents, including No. 5,790,080. Additional US and Foreign patents pending. Specification subject to change without notice.

For information regarding SkyCross Inc. and its products, see website at [www.skycross.com](http://www.skycross.com), email [info@skycross.com](mailto:info@skycross.com) or call 321-308-6600