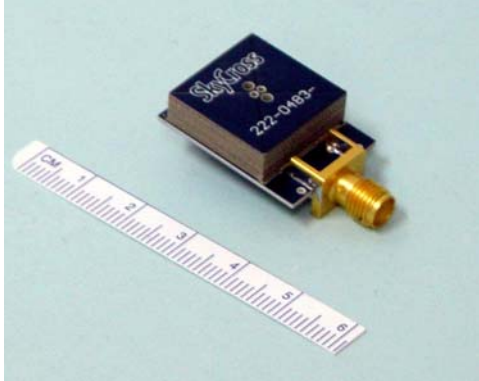


## 2.45 GHz WLAN Monopole Antenna for 802.11b and Bluetooth Wireless Applications



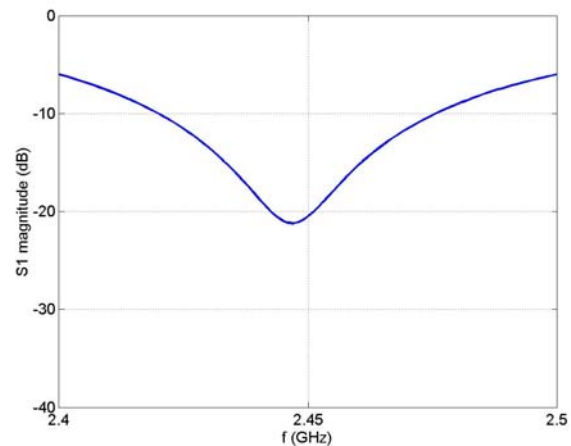
### Features

- *Very Efficient MLA Technology*
- *ISM Band*
- *Omni-Directional Pattern*
- *Peak Gain +1.5 dBi*
- *Low Profile for Embedded Applications*

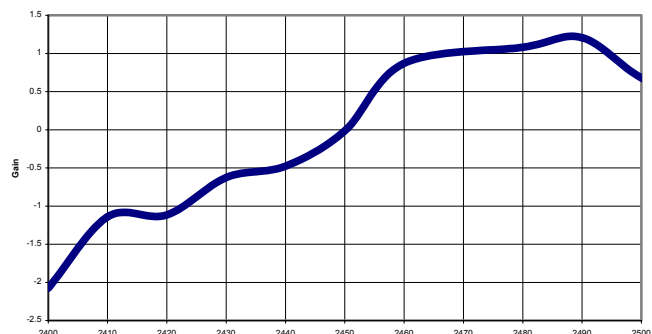
This 2.45 GHz WLAN antenna is designed using SkyCross' patented MLA technology, providing superior efficiency and gain directivity in a small package. This antenna is the best performance solution for developers requiring an omni-directional beam pattern in WLAN applications.

Electrical Specifications	
Frequency Range	2.4 — 2.5 GHz
Gain	1.5 dBi Peak
VSWR	< 3.0:1
Polarization	Linear
Azimuth Pattern	Omni-directional
Feed Impedance	50 Ohms Unbalanced

### Typical Return Loss

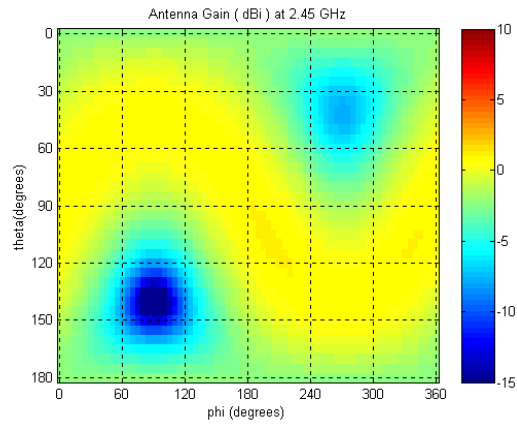


### Swept Gain

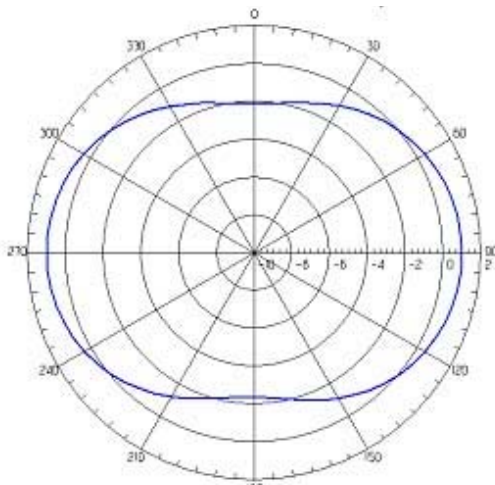


Mechanical Specifications	
Size	0.73 x 0.73 x 0.2 in 18.5 x 18.5 x 5.1 mm
Weight	4.0 g*
*weight does not include ground plane or connector	

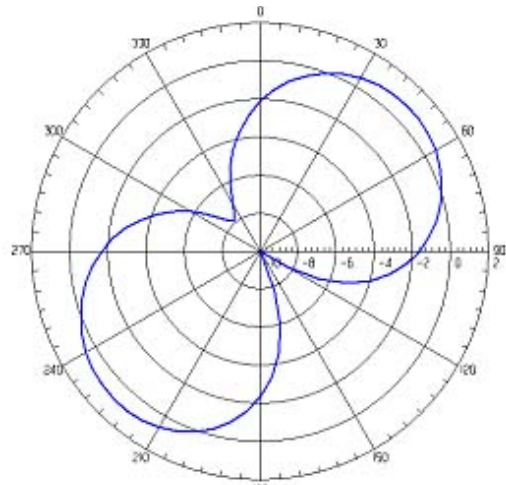
### Spherical Gain Contour Map



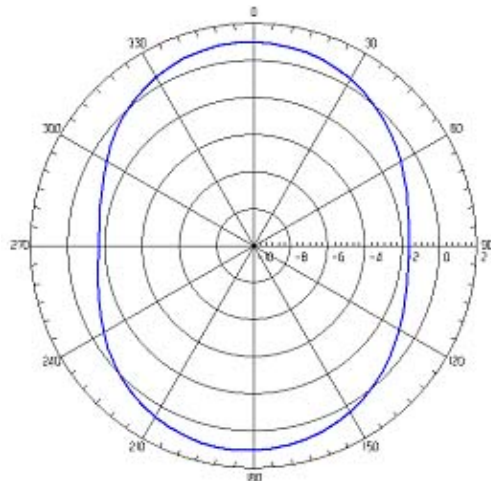
### Typical Gain Pattern



Elevation Cut  
Phi = 0 degrees

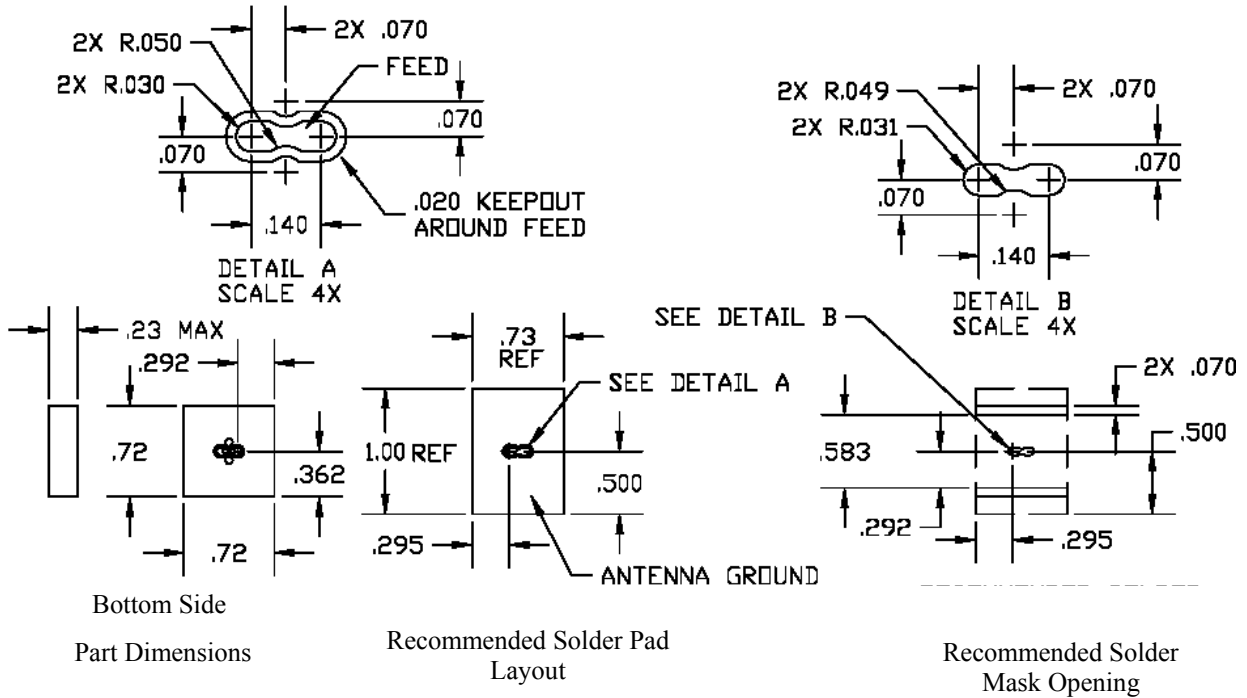


Elevation Cut  
Phi = 90 degrees



Elevation Cut  
Theta = 90 degrees

### 222-0483 Footprint Details



2 Place Dim    3 Place Dim    Angular

XX ±.01    XXX ±.005    ±.05

© 2001 SkyCross, Inc. SkyCross is a trademark of SkyCross, Inc. All rights reserved. Protected by one or more US Patents, including No. 5,790,080. Additional US and Foreign patents pending. Specifications subject to change without notice.

For information regarding SkyCross Inc. and its products, see website at [www.skycross.com](http://www.skycross.com), email [info@skycross.com](mailto:info@skycross.com) or call 321-308-6600