

Product Brief

Development Tools for Bluetooth™ Solutions

The Bluetooth **Starter Kit** from Texas Instruments provides an efficient development environment for a variety of Bluetooth point-to-point and point-to-multipoint enabled products.

The starter kit includes two hardware boards:

(1) Main Board – The Bluetooth section – includes the baseband device and the radio module. All the physical layers up to the host controller interface (HCI) are embedded in the firmware of the baseband device.

(2) Generic Interface Board – The application section – provides the necessary peripherals needed for quick and easy application development.

Software

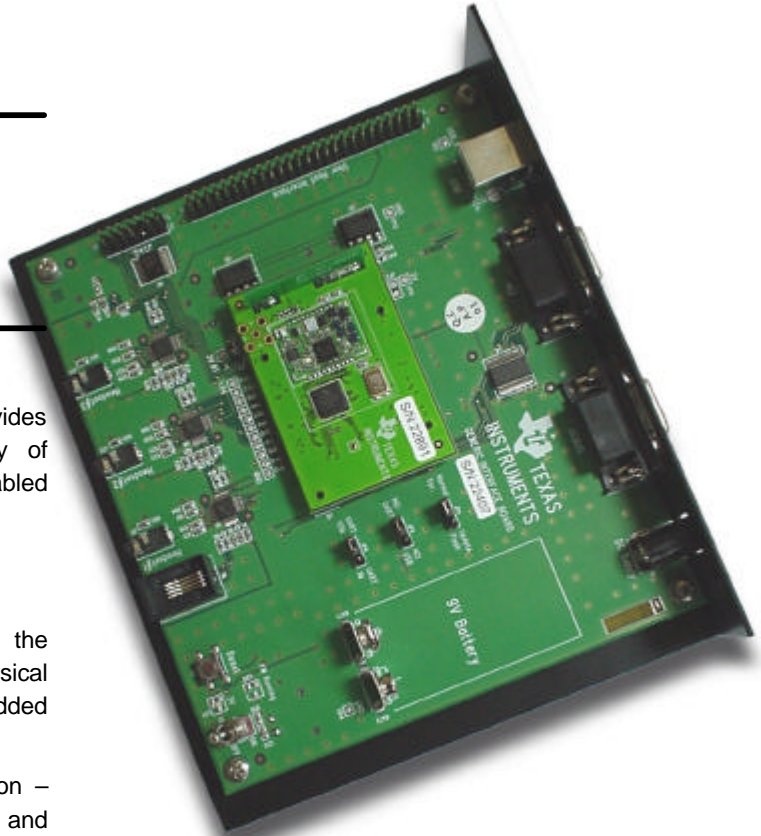
The **Bluetooth HCI Commander** software is an integral part of the starter kit package.

This Multi-Window environment enables actions such as sending HCI commands or receiving HCI events to or from the Bluetooth chipset. This software also incorporates a powerful script language, enabling the formation of custom scripts at the HCI level.

The scripting language has the following capabilities: sending and receiving data (in hexadecimal or decimal I formats), evaluation of received data, variables, script execution control command, and insertion of remarks.

The HCI commander runs on a PC and controls the starter kit hardware via an RS-232 serial port or USB port.

The **Firmware Update Utility** enables the firmware update (BSN6040 baseband controller only).



BSN60XX Starter Kit

- Generic Interface Board (**GIB**)
- BSN60xx Main Board (**MB**)
- USB / RS-232 / UART External Interfaces
- On Board TRF6001 Class 1 RF Module + Antenna (on the BSN60xx MB)
- Power Supply / Battery / USB Power Operation
- 3 Audio Jacks for Simultaneous Voice Links (With the BSN6040 MB)
- Chipset Power Consumption Measurement Ability
- User Friendly PC Software Tools

Software Package

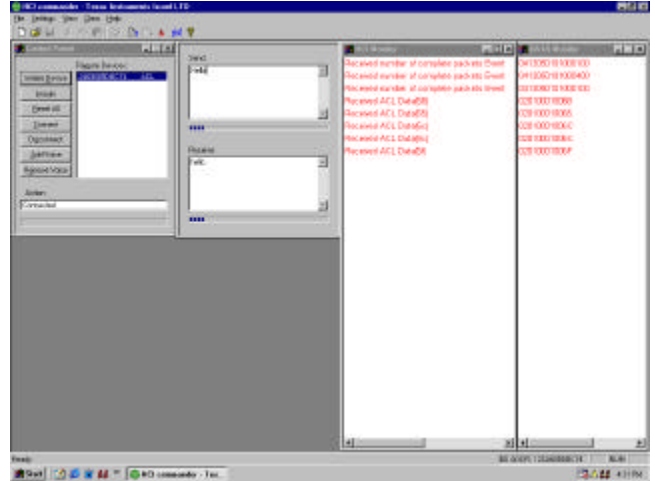
The package contains the following main features:

Demonstration of Bluetooth RF link activities, multiple voice link, and text chat.

Sending HCI commands to receiving HCI events from the Bluetooth devices.

Ability to edit scripts of HCI commands using a special language.

Ability to monitor data flow via the HCI RS-232 port.



Chat Box active of the remote RF Starter Kit receiving the word Hello and transmitting the word Hello.

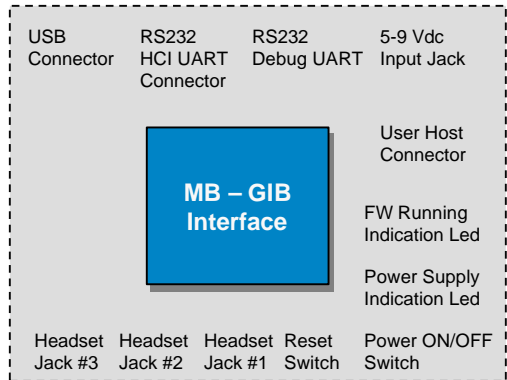
Available Solution

BSN6030 MB – Point-to-Point ROM version Baseband Controller (**BSN6030**) & RF Transceiver (**TRF6001**).
PC176C-SDK

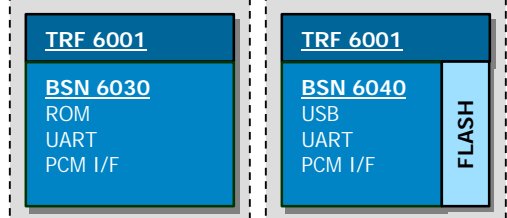
BSN6040 MB – Point-to-Multipoint Baseband Controller (**BSN6040**) with External Flash & RF Transceiver (**TRF6001**).
PC178C-SDK

Each of the above-mentioned MBs can interface to different applications through PCM, HCI, SPI, Debug, and connections.

GIB



MB - BSN60XX



The red/black bar is a trademark of Texas Instruments.

Bluetooth is a trademark owned by the Bluetooth SIG, Inc., USA and licensed to Texas Instruments

Important Notice: The products and services of Texas Instruments and its subsidiaries described herein are sold subject to TI's standard terms and conditions of sale. Customers are advised to obtain the most current and complete information about TI products and services before placing orders. TI assumes no liability for applications assistance, customer's applications or product designs, software performance, or infringement of patents. The publication of information regarding any other company's products or services does not constitute TI's approval, warranty or endorsement thereof.